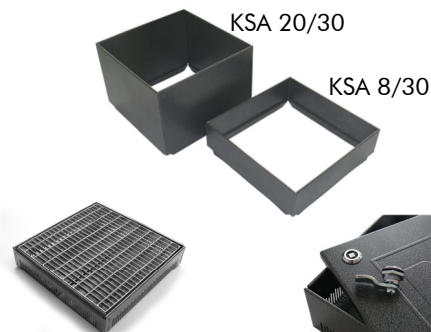


## Inspection Chamber KS 6/30 / KS 6/30-GR



Inspection chamber for protection and inspection of roof outlets for extensive green roofs and gravel roofs, with extension pieces also suitable for intensive green roofs.



alternatively available with galvanized grill

separate interlocks available

### Technical Data

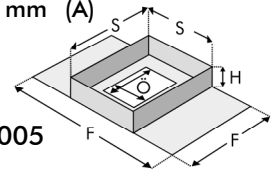
#### Inspection Chamber KS 6/30

Made of plastic-coated aluminium with lateral slots for water passage. Detachable and walkable cover made of galvanized, plastic-coated steel with two finger holes. If required, the interlocks can be installed into these holes.

**Colour:**  
**Height:**  
**Outer dimension of the Chamber** (at transportation):  
**Flange** (extended, including chamber):  
**Aperture dimension:**  
**Slot width:**  
**Weight:**

#### Order No. 4006

old silver-antique  
 ca. 60 mm (H)  
 ca. 300 x 300 mm (O)  
 ca. 300 x 530 mm (F)  
 ca. 240 x 240 mm (A)  
 ca. 3 mm  
 ca. 2.6 kg



#### Inspection Chamber KS 6/30-GR

as above, but with detachable galvanized grill.

**Mesh width:**  
**Weight:**

#### Order No. 4005

ca. 30 x 10 mm  
 ca. 3.0 kg

#### Accessories

**Extension Piece KSA 8/30**  
**Extension Piece KSA 20/30**  
 for elevation of KS 6/30 in segments of 80 mm or 200 mm.

**Order No. 4008**  
**Order No. 4020**

#### Set of interlocks

consisting of two interlocks, for easy installation into the finger holes and one square spanner.

#### Order No. 9031

**Also available as KS 10/30 with 100 mm of height**

#### Order No. 4010

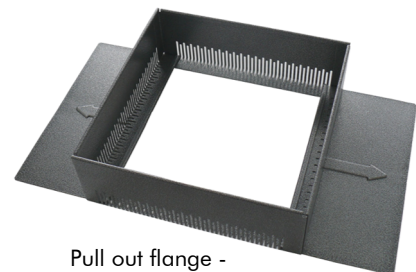
### Features

- low transport volume, yet fix positioning achieved by superimposed load when installed
- fits all outlets, up to a 230 mm diameter
- walkable, corrosion-resistant
- fine lateral slots allow for an installation in bulk material too
- elevation with additional extension pieces
- alternatively available with galvanized grill
- separately available: set of interlocks for easy installation into the finger holes

### Application Example



Pull out flange - inside the chamber for easy transportation and storage



Pull out flange - pulled out prior to installation

### Specification Suggestion

Inspection chamber made of plastic-coated aluminium, cover made of galvanized and plastic-coated steel or alternatively with galvanized grill; colour: old silver-antique, with pull out flange at two opposite sides and with vertical drainage slots along the sides, height ca. 60 mm, load bearing capacity Class H, according to German Standard DIN 19599, slots for water

passage according to German Standard DIN 1986; delivery and installation above the outlet, with or without set of interlocks (please delete as appropriate).

Make: ZinCo Inspection Chamber  
 KS 6/30 / KS 6/30-GR  
 Enquiries: ZinCo GmbH,  
 Phone: +49 7022 6003-0

