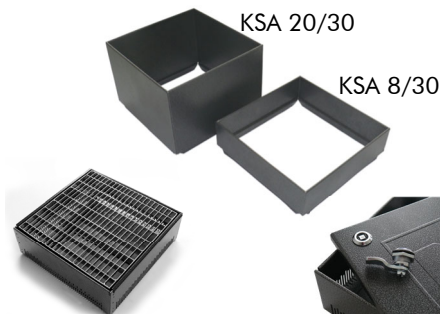


## Inspection Chamber KS 10/30 / KS 10/30-GR



Inspection chamber for protection and inspection of roof outlets for extensive green roofs and gravel roofs, with extension pieces also suitable for intensive green roofs.



alternatively available with galvanized grill

separate interlocks available

### Technical Data

#### Inspection Chamber KS 10/30

Made of plastic-coated aluminium with lateral slots for water passage. Detachable and walkable cover made of galvanized, plastic-coated steel with two finger holes. If required, the interlocks can be installed into these holes.

Colour:

old silver-antique

Height:

ca. 100 mm (H)

Outer dimension of the Chamber (at transportation):

ca. 300 x 300 mm (O)

Flange (extended, including chamber):

ca. 300 x 530 mm (F)

Aperture dimension:

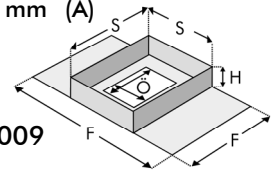
ca. 240 x 240 mm (A)

Slot width:

ca. 3 mm

Weight:

ca. 2.8 kg



#### Inspection Chamber KS 10/30-GR

as above, but with detachable galvanized grill.

Order No. 4009

Mesh width:

ca. 30 x 10 mm

Weight:

ca. 3.3 kg

#### Accessories:

Extension Piece KSA 8/30

Order No. 4008

Extension Piece KSA 20/30

Order No. 4020

for elevation of KS 10/30 in segments of 80 mm or 200 mm.

Set of interlocks

Order No. 9031

consisting of two interlocks, for easy installation into the finger holes and one square spanner.

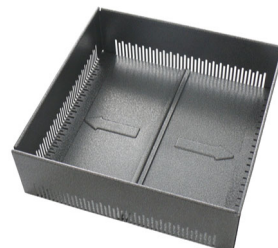
Also available as KS 6/30 with 60 mm of height

Order No. 4006

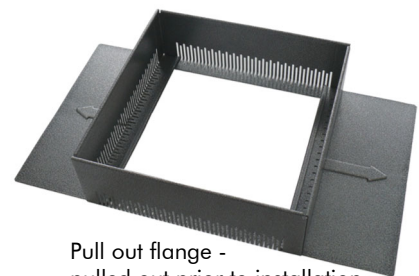
### Features

- low transport volume, yet fix positioning achieved by superimposed load when installed
- fits all outlets, up to a 230 mm diameter
- walkable, corrosion-resistant
- fine lateral slots allow for an installation in bulk material too
- elevation with additional extension pieces
- alternatively available with galvanized grill
- separately available: set of interlocks for easy installation into the finger holes

### Application Example



Pull out flange - inside the chamber for easy transportation and storage



Pull out flange - pulled out prior to installation

### Specification Suggestion

Inspection chamber made of plastic-coated aluminium, cover made of galvanized and plastic-coated steel or alternatively with galvanized grill; colour: old silver-antique, with pull out flange at two opposite sides and with vertical drainage slots along the sides, height ca. 100 mm, load bearing capacity Class H, according to German Standard DIN 19599, slots for water

passage according to German Standard DIN 1986; delivery and installation above the outlet, with or without set of interlocks (please delete as appropriate).

Make: ZinCo Inspection Chamber  
KS 10/30 / KS 10/30-GR  
Enquiries: ZinCo GmbH,  
Phone: +49 7022 6003-0