

Product Data Sheet

Edge Inspection Chamber for Underground Parking



Edge Inspection Chamber for Underground Parking made of aluminium for installation at the edge of the underground car park and accommodation of the Retention Run-off Limiter RD 28



Retention Run-off Limiter RD 28

View from below

Technical Data

Edge Inspection Chamber for Underground Parking **Order No. 4021**
Inspection chamber for the connection of a down pipe at the edge of underground parking to accommodate the Retention Run-off Limiter RD 28. Consisting of an aluminium inspection chamber base with a connection collar for sealing with liquid sealant on the on-site upstand and 2 cantilevers of galvanised steel to support the inspection chamber at the outside wall of the underground parking, incl. cover, incl. Retention Run-off Limiter RD 28.

Set: Including Retention Run-off Limiter RD 28 **Order No. 4022**

Inspection Chamber:

Height: inspection chamber base ca. 200 mm,
Outer dimensions: ca. 400 x 400 mm
Weight: ca. 9 kg
Cover: ca. 400 x 400 mm

Retention Run-off Limiter RD 28

Material: rigid PVC
Flow-control device, diameter: ca. 280 mm
Overflow pipe, inner diameter: ca. 75 mm
Overflow, adjustable height: ca. 30 mm - 100 mm

Adjustable flow rate with
initial attenuation height of 55 mm: from ca. 0,025 l/s up to ca. 0,60 l/s
initial attenuation height of 85 mm: from ca. 0,030 l/s up to ca. 0,75 l/s

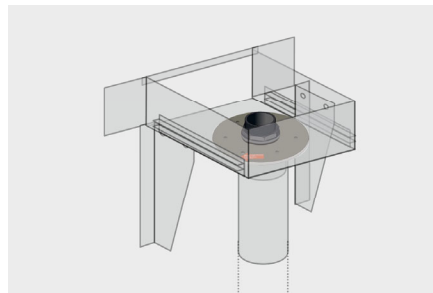
Accessory: Extension Piece KSA 10/40, height ca. 100 mm, Order No. 4012
Extension Piece KSA 20/40, height ca. 200 mm, Order No. 4013

Features

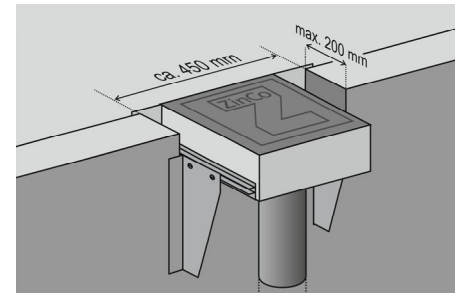
- for installation of Stormwater Management Roofs on 0°-roofs in combination with spacer elements for rainwater attenuation
- suitable for installation at the edge of the underground car park
- for connection of a DN 100 downpipe and to accommodate the RD 28 Retention Run-off limiter
- flow rate and overflow height of the Retention Run-off limiter can be adjusted project specifically
- extension pieces available for height adjustment in case of higher build-ups
- walkable, corrosion-resistant
- separately available: set of interlocks for easy installation into the finger holes

3-D-drawing

Open:



Closed:



Specification Suggestion

Edge inspection chamber for connecting a down pipe at the edge of underground parking, to accommodate the Retention Run-off Limiter RD 28, with connection collar for sealing with liquid sealant at the on-site upstand, incl. 2 cantilevers, galvanised steel; height approx. 200 mm or 300 mm incl. connection pipe, cover

approx. 400 x 400 mm, weight approx. 9 kg, supply and install at the edge of the underground car park.

Make: Edge Inspection Chamber for Underground Parking
Enquiries: ZinCo GmbH,
Phone: +49 7022 6003-0